

EXP-9000

- Size (Main body) W475mm x D186mm x H300mm
- Weight (Main body) 8.9kg



Standard

Wide extension table



Wider space makes sewing for large works easily such as curtains and quilts.

Foot controller



Easy start and stop operation with your foot.

Hard case



Hard case protects the machine from the dust.

Other features

Full automatic buttonhole	Just set the button on the buttonhole foot, the buttonhole is completed automatically.
Notification lamp	Ready when the red light turns green, you can start sewing pressing the button.
Lock presser foot	Keep presser foot horizontally with a simple button operation, easy to sew even thick material.
Auto tack button	Tack stitch function without puckering.
Smart accessory box	A convenient box store accessories inside the table.
Needle up-down button	The needle moves up and down by the button, convenient for square stitch and single stitch.
One-touch slow button	Slower the sewing speed instantly.
Drop feed	Lower the feed dog with a lever, moving the fabric freely, ideal for free motion quilting.
LED lighting for sewing space	Bright LED illuminates working space.
Free arm	Sew tubular items like sleeves, trousers, etc. Simply remove the detachable accessory box to access the free arm.
Thread sensor	If the upper thread breaks or is incorrectly threaded, the sensor will automatically stop the machine.
Embroidery unit	Embroidery unit is available as an option.

Option



Optional embroidery unit

EU-5

Connect optional embroidery unit to enhance your works



imagination to creation

EXP-9000

Manufactured by:

HappyJapan

HappyJapan Inc.

TOKYO OFFICE 2-9-5,Taito,Taito-ku,Tokyo, Japan

TEL: +81-3-3834-0711 FAX: +81-3-3835-8917

E-mail: sew-info@happyjpn.com

<https://www.happyjpn.com/en/product/sewing>



Distributed by:

HappyJapan

Comfortable sewing and easy use with innovative features.
Happiest sewing life with EXP-9000.



New 3 New “FEEDING” features

1

HAPPY BOX FEED

Feeding movement

Needle plate

Ideal sewing function for thick, thin and elastic fabrics.

By horizontal movement of the feed dog, the feed dog contacts fabrics longer time than current models, feeding thin or stretchable fabrics smoothly.

2

ZIGZAG FOOT (standard foot)

Eliminate skipping stitches.

Newly Improved zigzag foot feeds the fabrics firmly.

Wide movement of zigzag foot allows to sew thick fabrics without skipping stitch.

3

7 PIECE FEED DOG

Reducing puckering of thin fabric.

7 piece feed dog reduces slipping and puckering.

Key features

Happy one step needle threader
Thread up to the guide and lower the lever, get the thread through the eye of the needle. An excellent feature operated with one hand action.
(* For household sewing machine needles 11 to 16)

Quick change needle plate
Easy replacing the zigzag needle plate to straight needle plate.

LCD color touch screen
Simple and visible LCD color screen, easy and excellent operability by touch screen.

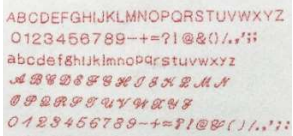
Wide sewing space
Sewing space is 200mm.
Wide sewing space makes it easy to handle large fabrics.

Foot pressure adjustment



The pressure of the presser foot can be adjusted from 5 levels according to the thickness of the fabric.

Lettering stitch



Three alphabets, letter, and your favorite patterns can be combined.

New threading system



Just thread in numerical order regardless of needle position.

Easy bobbin winding



To set up the bobbin for winding, simply insert the bobbin to the shaft, wind the thread. The motor automatically stops when winding finish.

Knee lifter

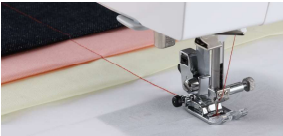


Raise / lower the presser foot.

Silent design

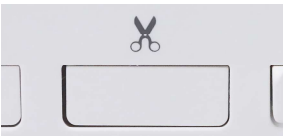
Comfortable sewing without noise.

Computerized automatic thread tension



Adjust appropriate thread tension according to the pattern.

Automatic thread cutter



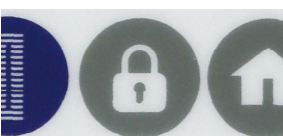
Upper and bobbin thread are cut short automatically.

Easy bobbin threading



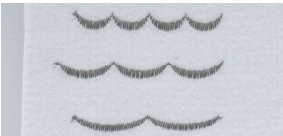
Just insert bobbin and follow the guide, it allows you to start sewing without pulling up bobbin thread.

Lock button



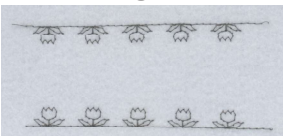
Safety function which locks the machine, replacing needle/foot safely and easily.

Elongator



It allows to stretch length without changing the sewing density. (It depends on embroidery designs)

Mirror image



The pattern can be inverted. (It depends on embroidery designs)

Stitch pattern List (Total 478 types)

								<																									